

INVIGORATE!

SPARKING
PROFESSIONAL
& PERSONAL
INSPIRATION



MPMA ANNUAL CONFERENCE
SEPTEMBER 27-30, 2023
CORPUS CHRISTI, TEXAS

Special Thanks To:



condit



DISTINGUISHED.
FINE ART & COLLECTIBLES



SCHEDULE AT-A-GLANCE

Tuesday, September 26, 2023

5:00 p.m. - 8:00 p.m. MPMA Board Meeting
6:00 p.m. - 8:30 p.m. Registration Open

Wednesday, September 27, 2023

7:00 a.m. - 7:30 a.m. Tour Registration
7:30 a.m. - 5:30 p.m. General Registration
7:30 a.m. - 5:00 p.m. Tours
8:30 a.m. - 4:15 p.m. Workshops
8:30 a.m. - 4:30 p.m. Auction Receiving
1:00 p.m. - 4:00 p.m. Exhibit Hall Setup
4:00 p.m. - 5:00 p.m. Meet-Ups
4:30 p.m. - 5:30 p.m. Sponsor Happy Hour with MMD Services
5:30 p.m. - 9:00 p.m. Evening Event at the Art Museum of South Texas and Corpus Christi Museum of Science and History

Thursday, September 28, 2023

7:00 a.m. - 5:00 p.m. Registration Open
7:30 a.m. - 5:00 p.m. Exhibit Hall & Silent Auction
7:30 a.m. - 8:30 a.m. Committee Meetups
7:30 a.m. - 8:30 a.m. Coffee in Exhibit Hall
8:00 a.m. - 11:45 a.m. Auction Items Receiving
8:30 a.m. - 9:45 a.m. Concurrent Sessions
10:00 a.m. - 11:15 a.m. General Session
11:15 a.m. - 11:45 a.m. R.E.A.L. Stage Break
11:45 a.m. - 1:00 p.m. Business Lunch
1:15 p.m. - 2:30 p.m. Poster Sessions
2:30 p.m. - 3:00 p.m. R.E.A.L. Stage Break
3:00 p.m. - 4:15 p.m. Concurrent Sessions
4:15 p.m. - 5:15 p.m. Meet-Ups
5:30 p.m. - 8:30 p.m. An Evening aboard the USS Lexington

Friday, September 29, 2023

8:15 a.m. - 5:00 p.m. Registration Open
8:00 a.m. - 4:15 p.m. Exhibit Hall & Silent Auction
8:00 a.m. - 8:45 a.m. Coffee in Exhibit Hall
8:15 a.m. - 10:00 a.m. Auction Items Receiving
8:45 a.m. - 10:00 a.m. Concurrent Sessions
10:00 a.m. - 10:30 a.m. Exhibit Hall Break
10:30 a.m. - 11:45 a.m. Concurrent Sessions
11:45 a.m. - 1:00 p.m. Leadership Luncheon
1:15 p.m. - 2:30 p.m. Concurrent Sessions
2:30 p.m. - 3:00 p.m. R.E.A.L. Stage & Exhibit Hall Break
3:00 p.m. - 4:15 p.m. Concurrent Sessions
4:15 p.m. - 4:45 p.m. Exhibit Hall Closing Reception
4:45 p.m. Silent Auction Closes
4:45 p.m. - 6:45 p.m. Exhibit Hall Breakdown
4:45 p.m. - 5:45 p.m. Meet-Ups
5:15 p.m. - 6:15 p.m. Pre-Awards Cash Bar Reception
6:15 p.m. - 8:30 p.m. Awards Dinner & Live Auction

Saturday, September 30, 2023

8:00 a.m. - 4:00 p.m. Helping Hands Brigade
7:30 a.m. - 11:30 a.m. Registration Open for Tours
8:00 a.m. - 5:00 p.m. Tours
5:30 p.m. - 7:30 p.m. Closing Reception

FORT MCKAVETT STATE HISTORIC SITE

Experience the places that impacted the history of the Lone Star State.

Visit
HISTORIC TEXAS
TexasHistoricSites.com

TEXAS HISTORICAL COMMISSION
REAL PLACES TELLING REAL STORIES

Dear Colleagues and Friends,

Welcome to back the Lone Star State for the 2023 meeting of the Mountain Plains Museums Association, September 27-30.

The Conference Program Committee set the tone for this year's journey by emphasizing that, "we turn challenges into opportunities, we defy budgets, we conquer obstacles, we spark creative solutions, we lead, and we partner. Together we innovate, invigorate, and inspire!"

That perspective is the perfect prelude to a gathering on the southern Gulf Coast. Corpus Christi is situated in the Tropical Trails Region of Texas, an area that boasts diverse cuisine, music, art, nature, history, culture, and architecture. Historic sites include battlegrounds, museums, lighthouses, and landmarks. Discover the USS Lexington Museum, Art Museum of South Texas, Texas State Aquarium, Corpus Christi Museum of Science and History, Tejano Civil Rights Museum, Texas State Museum of Asian Cultures, with optional excursions to the Fulton Mansion State Historic Site, Texas Maritime Museum, Rockport Art Center, and historic sites devoted to the stories of the Texas Revolution.

The vibrant southern tip of Texas, a triangle of coastal plains roughly bounded by the Rio Grande and San Antonio River and the Gulf of Mexico, is bathed in more than 200 hours of sunshine in the month of September. Surrounded by miles of beaches, shopping, and fresh local seafood, expect to be treated to true South Texas Hospitality.

And let's face it, you are entitled to a beautiful change of venue for a few days. At the heart of innovation, invigoration, and inspiration is solace and reflection. Connect with colleagues, learn something new, adapt a tried-and-true idea, and add to your toolkit of professional practices.

We look forward to seeing you!

Inez Wolins
Assistant Deputy Executive Director of Historic Sites
Texas Historical Commission



Visit us at MPEA 2023 in Corpus Christi, TX

See what we can build together...

condit exhibits

design | fabrication | installation



Special Thanks to MPMA's 2023 Conference Sponsors:

The Texas Historical Commission
MMD Services
Condit
The Projects Group
Distinguished Fine Arts & Collectibles
Broadcast Music Incorporated (BMI)
Traveling Exhibits by Kaufman College

Special Thanks to MPMA's 2023 Local Hosts:

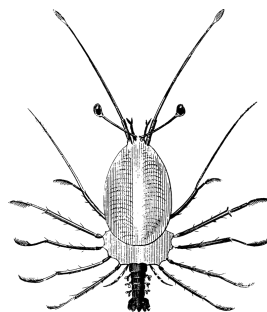
Inez Wolins, Assistant Deputy Executive Director of Historic Sites, Texas Historical Commission
Sarah Morgan, Executive Director, Art Museum of South Texas
Karen Stevenson, Executive Director, Corpus Christi Museum of Science and History
Michael Womack, Executive Director & Horticulturist, South Texas Botanical Gardens & Nature Center
Steve Banta, Executive Director, USS Lexington
Bill Irwin, Director of Historic Sites Operations, Historic Sites Division, Texas Historical Commission

Special Thanks to MPMA's 2023 Program Committee:

Jason Harris, Executive Director, Chisholm Trail Museum, Kingfisher, OK, Co-Chair
Donna Merkt, Executive Director, South Dakota Art Museum, Brookings, SD, Co-Chair
Greta Brunschwyler, Executive Director, Millicent Rogers Museum, Taos, NM
Amanda Boehm-Garcia, Dir. of Learning and Engagement, Fred Jones Jr. Museum of Art, Norman, OK
Deborah Check-Reeves, Curator of Education, National Music Museum, Vermillion, SD
Maggie Mazzullo, Head Registrar Collections Manager, CU Art Museum, Boulder, CO
Katy Schmidt, Curator of Collections, South Dakota State Historical Society, Pierre, SD
Delayna Trim, Curator of Collections, Mabee-Gerrer Museum of Art, Shawnee, OK
Heidi Vaughn, Director, Laboratory of History Museum & Interim Director, Museum Studies Program, University of Central Oklahoma, Edmond, OK
Jenny Yearous, Curator of Collections Management, State Historical Society of North Dakota, Bismarck, ND

Special Thanks to MPMA's 2023 Conference Staff:

Justin Jakovac, Executive Director, MPMA, Broken Arrow, OK
Mariah Carrillo, Conference Coordinator, Los Angeles, CA



Tuesday, September 26, 2023

Registration Open

6:00 p.m. - 8:30 p.m.

MPMA Board Meeting

5:00 p.m. - 8:00 p.m.



MMD
SERVICES

FINE ART SERVICES • DESIGN FABRICATION • LIGHTING DESIGN

A Comprehensive
Museum Services
Company



We are visual, three-dimensional storytellers who combine creativity with comprehensive research and development to create engaging and technology driven exhibits. From exhibit design and fabrication to fine art services, to illumination and electrical, MMD Services is here to help you design, develop, produce, install, and share your story in an inspiring way.

Visit us at www.mmd.services or give us a call at 214.252.0692

NOTE: THE FOLLOWING ABBREVIATIONS AT THE END OF SESSION TITLES INDICATE THE TYPE OF CONTENT THAT IS BEING EXPLORED:

ADMINISTRATION (AD)
COLLECTIONS (COLL)
COMMUNITY ENGAGEMENT (CE)
DEVELOPMENT (DEV)
DIVERSITY, EQUITY, ACCESSIBILITY, AND
INCLUSION (DEAI)
EDUCATION (ED)
EMERGING MUSEUM PROFESSIONALS (EMP)
EXHIBITS (EX)

FACILITIES/SECURITY (F/S)
INDIGENOUS (INDG)
INTERPRETATION (INT)
MARKETING (MAR)
MEMBERSHIP (MEM)
SMALL MUSEUMS (SM)
TECHNOLOGY (TECH)
VISITOR SERVICES (VS)
VOLUNTEERS (VOL)

If you see this old-timey lock, it means that



session pre-registration is required

Events with this icon require advanced registration and a ticket or wristband will be necessary for entry.

Wednesday, September 27, 2023

Registration Open

7:00 a.m. - 5:30 p.m.



Tours

T1: San Antonio

Departure: 7:30 a.m. / Return: 5:00 p.m.

Bus loads at the Omni's Shoreline entrance

Join us for a fascinating tour of early Texas, organized by the Texas Historical Commission and Texas Independence Trail. Our journey takes us through San Antonio, to explore some of the city's most historic and significant sites.

T2: Rockport

Departure: 8:00 a.m. / Return: 5:00 p.m.

Bus loads at the Omni's Shoreline entrance

Join the Texas Historical Commission and Texas Independence Trail on an unforgettable tour that will take you on a journey back in time to experience the fascinating history and culture of Rockport, Texas.

T3: South Texas Botanical Gardens & Nature Center

Departure: 9:30 a.m. / Return: 12:30 p.m.

Bus loads at the Omni's Shoreline entrance

The South Texas Botanical Gardens & Nature Center is dedicated to preserving and studying the indigenous flora and fauna found in the South Texas region. We have created a special tour for museum professionals that is designed to inspire and inform about our exhibitions and collections.



MPMA CORPUS CHRISTI
SEPTEMBER 27
WEDNESDAY



Workshops

Go Project Wild!

Laguna Madre

9:00 a.m. - 12:00 p.m.

Go WILD at the Project WILD workshop! Try fun hands-on activities, explore curriculum, and receive a Project WILD K-12 Curriculum & Activity Guide. This interdisciplinary approach to conservation and environmental education focuses on wildlife and habitat. Join us to discovery how you can share our fascinating natural world.

Disaster Planning Tour and Workshop at the Art Museum of South Texas

Departure: 1:45 p.m. / Return: 4:15 p.m.

Van loads at the Omni's Shoreline entrance

The Disaster Planning Tour and Workshop is a unique opportunity for museum professionals to gain insight and knowledge in preparing for the worst-case scenario. Being held at the Art Museum of South Texas, attendees will get a chance to examine the museum's state-of-the-art storage equipment and mitigation plan designed to withstand hurricane-associated storm surges and winds. This workshop will cover disaster recovery best practices and offer hands-on training geared towards mitigating damage caused by natural disasters such as hurricanes. Attendees will leave with practical skills and tools to be better prepared for catastrophic weather events in order to protect their collections, staff, and patrons.



DISPLAYS
FINE ART SERVICES

NATIONAL EXPERTS IN FINE ART SERVICES



TRANSPORTATION



FABRICATION



INSTALLATION



STORAGE



CONSERVATION

Trusted by the nations largest museums,
government and educational institutions,
galleries and private collectors since 1995.

DisplaysFAS.com | (817) 385-4433



MPMA CORPUS CHRISTI SEPTEMBER 27 WEDNESDAY

Meet-Ups

M1: Scholarship Recipient Gathering

Laguna Madre

4:00 p.m. - 4:15 p.m.

Scholarship recipients receive information about attending the conference.

M2: Mentor Ice-Breaker

Aransas

4:15 p.m. - 4:30 p.m.

Mentors/mentees are introduced to each other at this time and will travel together to the opening event.

Happy Hour

4:30 p.m. - 5:30 p.m.

Nueces

Take a sneak-peek and see what we have in store for this year's Exhibit Hall and Silent Auction. Participants are invited to enjoy this sponsored happy hour compliments of MMD Services prior to our opening Progressive.



FINE ART SERVICES • DESIGN FABRICATION • LIGHTING DESIGN



Evening Events

5:30 p.m. - 9:00 p.m.

EE1: Progressive: Art Museum of South Texas & Corpus Christi Museum of Science and History

Pre-registration required.

Bus departs Omni's Shoreline Entrance at 5:30 p.m. and returns starting at 8:00 p.m.



Join us for an unforgettable evening as we explore two unparalleled cultural institutions in the heart of Corpus Christi, Texas. Our progressive event will begin at the Art Museum of South Texas with a cocktail hour featuring heavy appetizers, where you'll have a chance to mingle with fellow museum professionals and take in the traveling exhibit on loan from Riverside Art Museum's Cheech Marin Collection.

From there, we'll make our way to the Corpus Christi Museum of Science and History, where we'll indulge in delectable desserts and continue our conversations in the exhibits and galleries dedicated to the exploration of the natural world, the history of the Gulf Coast, and much more.

A cash bar will be available at each location, ensuring that you can sip and savor to your heart's content. Don't miss this unique chance to experience two world-class museums in one unforgettable evening.

EE1A: Corpus Christi Museum of Science and History Behind the Scenes Tour (RC-MPMA)

Pre-registration required. Sold Out. Ticket-holders with gather at 7:45 p.m.



What's Your Story?



Share your community's history
with one of our fully-funded
Historical Markers



Want to learn more? Go to wgpfoundation.org

Thursday, September 28, 2023

Registration Open

7:00 a.m. - 5:00 p.m.

Exhibit Hall and Auction Receiving Open

8:00 a.m. - 11:45 p.m.

Exhibit Hall: Breakfast & Coffee
Nueces Ballrooms

7:30 a.m. - 8:30 a.m.

M3: Registrar's Meetup

Copano

7:30 a.m. - 8:30 a.m.

M4: EdCom Meetup

Matagorda

7:30 a.m. - 8:30 a.m.

Concurrent Sessions

8:30 a.m. - 9:45 a.m.

A1: Story Principles: The Ethics of Museum Interpretation (ED)

Corpus C

What are our responsibilities as museum interpreters? Who has the right to tell certain stories, and what is my role as a museum professional? How do I balance what the audience expects with the inherent needs of the stories I tell? This session will explore the best standards and ethical considerations for museum interpretation, storytelling, and audience engagement.

Presenter: Lauren Hunley, Community Historian, Western Heritage Center, Billings, MT/Chair, MPMA Workplace Sustainability Committee

A2: Collections Management Swap-Meet (COLL, SM)

Copano

In this informal meeting we will talk about all things collections. Everyone is welcome to share what has worked (or hasn't) in their collections management endeavors. The session will inspire you to improve your collections care. Questions and answers from the group are encouraged.

*Panelists: Rachel Gruszka, Collections Mgr., Anthropology, Museum of TTU, Lubbock, TX
Jenny Yearous, Curator of Collections Management, State Historical Society of North Dakota*



WCCFA
WESTERN CENTER FOR THE
CONSERVATION OF FINE ARTS

Providing Professional Art Conservation Services
throughout the United States since 1980.

The Western Center for the Conservation of Fine Arts serves individuals, museums, educational institutions, historic houses, federal and state agencies, and corporate collections by providing professional conservation treatment and analysis of paintings and painted surfaces.

303.573.1973 | www.wccfa.com | wccfa@wccfa.com
Denver, CO | Miami, FL | Northern Michigan

MPMA CORPUS CHRISTI SEPTEMBER 28 THURSDAY

A3: Dr. Susan La Flesche Picotte Hospital Restoration Initiative (IND)

Laguna Madre

Dr. Susan La Flesche Picotte, is one of the most extraordinary yet little-known figures in U.S. history. Her father, Joseph LaFlesche (last chief of the Omaha Tribe), sent her east to the Woman's Medical College of Pennsylvania where she studied medicine at a time when few women dared. After graduating as valedictorian in 1889, she chose to return to the reservation despite numerous prestigious job offers.

*Presenters: Dan Worth, BVH Architecture, Lincoln, NE
Vida Stabler, Umó'ho' Language & Cultural Center, Walthill, NE
Julie Davis, 106 Group, Minneapolis, MN*

A4: Building the Plane While Flying It (ADM)

Aransas

Leaders attempting to reinvigorate an organization always face choices: fix problems before embarking on a new path forward, or forge ahead and do both concurrently. Examine the research literature, learn approaches through two recent examples, and network with colleagues by choosing a real-life challenge and exploring solutions in small groups. Take away resources to inspire us as change makers and culture shifters, regardless of our place on the organization chart.

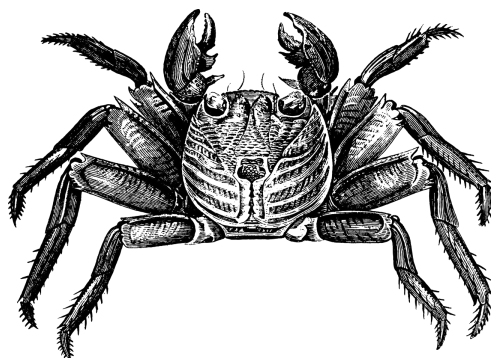
*Presenters: Inez Wolins, Assistant Deputy Executive Director of Historic Sites, Texas Historical Commission
Karen Stevenson, President & CEO, Corpus Christi Museum of Science and History*

A5: The Buck Starts Here | Leveraging Relationships for Fundraising (DEV, MEM, SM)

Matagorda

Inspiring people is the first step in any successful fundraising campaign. In a fast passed, data-driven world, finding the time to build a personal connection is challenging. Development staff across the country cite a lack of connection to their organization as one of the primary reasons for leaving a position. Failing to take time to build connections is detrimental to the long-term success of development staff and organizations. In this workshop, I'll review the "step before the step" in the traditional fundraising models. We will look at personal examples of successful and unsuccessful campaigns, identify the keys to the "perceived value" of membership, and leave prepared to sit at the kitchen table and inspires others to invest in the museums we are inspired by.

Presenters: Misty Serene, Salina Art Center, KS



**MPMA CORPUS CHRISTI
SEPTEMBER 28
THURSDAY**

General Session

Corpus A/B

10:00AM-11:15 AM

With the most recent wave of pushback against the humanities and diversity and inclusion efforts, museums are more important than ever as sites of public knowledge and moral courage. As our communities continue the economic recovery from the COVID pandemic, we must step up our efforts to foster robust heritage tourism that fills in the gaps that are being legislated into chasms. How do we do that? The answer is Latinos! Speaker Sarah Zenaída Gould will present her case for museums to create their own Latino heritage tourism plans and contribute to a new heritage tourism boom.

About the Speaker

Sarah Zenaída Gould, Ph.D. is the Executive Director of the Mexican American Civil Rights Institute, an emerging national museum and archive collecting and disseminating Mexican American civil rights history. A longtime museum worker and public historian, she has curated over a dozen exhibits on history, art, and culture, and was formerly the founding director of the Museo del Westside and the lead curatorial researcher at the Institute of Texan Cultures.



Gould serves on the boards of Latinos in Heritage Conservation, the Friends of the Texas Historical Commission, and Texans for the Arts, on the council of the American Association of State and Local History, and as an Advisor for the National Trust of Historic Preservation. She received a BA in American Studies from Smith College and an MA and PhD in American Culture from the University of Michigan. She is a former fellow at the National Museum of American History, the Winterthur Museum, and the American Antiquarian Society.

EXHIBIT HALL BREAK & R.E.A.L PRESENTATION STAGE

Nueces A/B

11:15am-11:45am

Real, Engaged, Audience, Learning is an unplugged, intimate, authentic, rapid, hands-on experience. Located in the Exhibit Hall, the R.E.A.L. Presentation Stage is your destination for a lively thought-provoking encounter. Here, conference attendees will learn about trends, techniques, and innovations in 10-minute how-to presentations.

MPMA CORPUS CHRISTI
SEPTEMBER 28
THURSDAY



L1: Business Lunch

Corpus A/B

11:45am-1:00pm

Susie Wilkening (she/her) has over 20 years of experience in museums, including 15 years leading custom projects for museums as well as fielding groundbreaking national research on the role of museums in American society.

Susie enjoys sharing her findings at various annual meetings, including the American Alliance of Museums, American Association of State and Local History, Association of Science-Technology Centers, Association of Children's Museums, and state and regional museum meetings.



Susie is a go-to expert on museums for the media, including The New York Times, The Wall Street Journal, Fast Company, NPR, and others. Additionally, she is the author of Audiences and Inclusion: A Primer for Cultivating More Inclusive Attitudes Among the Public and is the primary author of Life Stages of the Museum Visitor.

Susie earned a BS in History, Technology, and Society from Georgia Tech and an MA from the Winterthur Program in Early American Culture at the University of Delaware. She resides in Seattle, and her husband and curious children often accompany her as she travels to various museums and historic sites.



**Need help cataloging your collection?
Performing collection inventories?
Need training in cataloging or collections
management?**

Contact:

**Collections Research for Museums
4830 E Kansas Dr
Denver, CO 80246
303-757-7962**

Toll Free 1-877-757-7962

**<http://museumcollectionmgmt.com>
FREE INITIAL CONSULTATION**

MPMA CORPUS CHRISTI
SEPTEMBER 28
THURSDAY

Poster Sessions

Corpus C

1:15 p.m. - 2:30 p.m.

The Poster Session is an exhibit of Poster Presentations with an academic or professional focus. Each presenter makes brief remarks and answers questions to those who are circulating in the room. The format provides an introduction for people who have never presented at a conference or who want to present new research.

Posters efficiently communicate concepts and information to an audience using a combination of visuals and texts, interacting with viewers in an informal way. An abstract is a concise written summary of an undertaking such as a project, program, or investigation. An abstract is not a complete summary of an undertaking but instead highlights the most important points.

Presenters stand by their poster throughout the Poster Session, to offer information and engage in dialogue with conference delegates. There are two poster categories: Professional Posters and Graduate Student Posters.

Chair: *Dr. Eileen Johnson, Chair, Heritage and Museum Sciences & Senior Curator of Anthropology, Museum of Texas Tech University, Lubbock, TX.*

Special Thanks To:



BMI

Exhibit Hall Snack Break &
R.E.A.L Stage
Nueces A/B
2:30pm-3:00pm

Sponsored by BMI

MPMA CORPUS CHRISTI
SEPTEMBER 28
THURSDAY

Concurrent Sessions

3:00 p.m. - 4:15 p.m.

B1: Creating and Maintaining an Oral History Program (COLL)

Corpus C

Oral histories constitute “spoken archives.” Through these personally shared accounts, researchers obtain a clearer vision of a particular time period and experience. Donors are giving their personal stories rather than, or perhaps in addition to, their physical artifacts. Oral history programs are needed, especially for documenting marginalized voices. But what does it take to start and then maintain them? How do dedicated museum professionals convince administrations about the actual costs and efforts? Where do they find resources? What are the best ways to communicate with narrators and audiences to maintain both privacy, confidentiality, and transparency?

*Presenters: Carrie Meyer, Head, Robert S. Wigton Special Collections and Archives, UNMC, Omaha, NE
Maria Shellman, Archive Associate, UNMC, Omaha, NE
Larissa Krayer, Digital Archivist, UNMC, Omaha, NE*

B2: Bringing Museums Beyond their Walls (AD,VS)

Copano

How do you create an educational experience that reaches beyond the confines of a museum, especially in a rural setting? Both Heart Mountain Interpretive Center and The Homesteader Museum in Powell WY have found different ways of doing just this. Heart Mountain developed a virtual field trip experience allowing students from around the country and the world to see their museum. The Homesteader Museum took a different approach creating a traveling trunk program that brings objects, photographs, stories, and lessons from the museum into classrooms, and nursing homes. This panel will discuss how to create such programs, especially in rural settings, by using community resources and a strong museum network to find the right tools and that little spark of inspiration one needs to develop new and innovative ways of creating educational programming.

*Presenters: Michela Morrissey, Registrar/Collections Manager, Homesteader Museum, WY
Sybil Tubbs, Museum Educator, Homesteader Museum, WY*

B3: Artificial Intelligence in the Museum World (TECH)

Laguna Madre

Artificial intelligence applications are taking the world by storm. This session will explore some of the AI platforms publicly available and their uses for museum staff.

Presenters: John Woodward, Cultural Resources Manager, Wyoming Veterans Military Museum, Casper, WY

B4: EdCom Skill Swap (ED)

Matagorda

This is an opportunity for Museum educators to gather and “talk shop”. Join the conversation about programming, collaborations...any and all things museum education! Bring your questions, ideas, and thoughts for a vibrant and engaging conversation our most prescient issues.

Presenters: EdCom Board

MPMA CORPUS CHRISTI SEPTEMBER 28 THURSDAY

B5: Playing the Long Game: Cultivating a Decade of Board Growth and Best Practices at the Texas Association of Museums (ADM)

Aransas

This session is designed for museum professionals who want to develop a strong board of directors. Join esteemed members of the Texas Association of Museums Board, both past and present, who have contributed to the growth and development of the board for over a decade. Gain valuable insights into the collaborative efforts undertaken to establish effective selection processes, implement slate voting and core document review, and foster a diverse board culture that functions as a community of leaders and serves as a source of inspiration for each other and the organization as a whole.

*Presenters: Chris Dyer - President & CEO, Dr Pepper Museum, Waco, TX
Margaret Koch - Director, Bullock Texas State History Museum, Austin, TX
Michael C. Sproat - Curator, Sam Houston Memorial Museum, Huntsville, TX
Brittany Petrilli - Executive Director, Texas Association of Museums, Austin, TX*



Evening Event

5:15 p.m. - 8:30 p.m.

EE2: Dinner Aboard the USS Lexington

**Buses load up at the Omni's Shoreline entrance
5:15 and Depart when Full*

Return to Conference hotel starting at 8:00 p.m.

Join fellow museum professionals for our second evening's feature event filled with great food, great drinks, great conversation and great views. Enjoy mouth-watering all-you-can-eat barbecue with a variety meats and sides - wash it down with iced tea and your choice of drinks from our cash bar. This will be an evening to remember, so don't miss out on the opportunity to network and socialize with friends in a unique, historic setting. We look forward to seeing you aboard the Lex!

MANAGE YOUR COLLECTION WITH **Proficio** Elements by Re:discovery

The big museum system scaled to smaller collections and tighter budgets. We're currently offering a free one-on-one Demo of Elements! Call 434.975.3256, ext. 180.

- AFFORDABLE
- COMPREHENSIVE
- USER-FRIENDLY
- EASY NAVIGATION
- REPORTS
- GLOBAL SEARCHES

ART | CULTURAL HISTORY | NATURAL HISTORY | ARCHIVES | RESEARCH LIBRARY

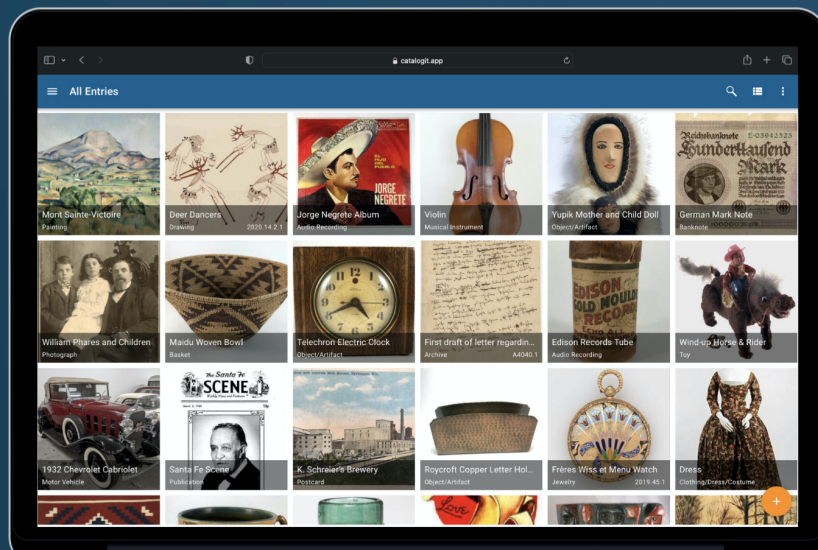
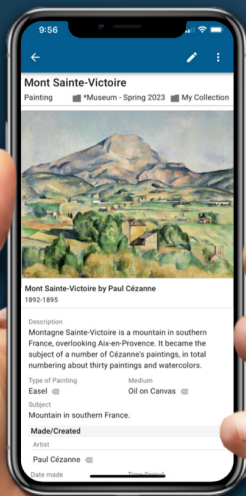
For more than 30 years Re:discovery Software's team of museum professionals and software engineers has produced collections management systems that make the job of managing collections intuitive and efficient. Sign-up for a free 30-minute webinar! Contact sales@redisov.com.

WWW.REDISCOVERYSOFTWARE.COM



Imagine loving your CMS.

Secure, comprehensive, cost-effective
Works on mobile & desktop
Collaborate with your team
Access anywhere, anytime
Publish to the web



Using Past Perfect 4 or 5? For a limited time migrate for free, followed by a free 60 day trial.

EmbARK user? Use CatalogIt for 6 months free after your EmbARK migration.

Learn more about CatalogIt
and our migration offers:
www.catalogit.app/mpma



"Since I've been at the museum for the last 9 years, nothing has been as transformative to our operation than making the switch to CatalogIt."

Sara Wilson, Executive Director of St. Joseph Museums

@catalogit



Friday, September 29, 2023

Registration Open

7:00 a.m. - 5:00 p.m.

Exhibit Hall and Silent Auction Open

8:00 a.m. - 4:15 p.m.

BR2: Exhibit Hall: Breakfast and Coffee

Sponsored by the Kauffman Museum's Traveling Exhibits

8:00 a.m. - 8:45 a.m.



Concurrent Sessions

8:45 a.m. - 10:00 a.m.

C1: Challenges of Historic Building Conservation and Preservation on the Plains (COLL, F/S, SM)

Corpus C

The program will address the challenges small museums face with outdoor historic buildings, in regards to best practices. Focusing on their upkeep and preservation, the issues discussed will be about practical and pragmatic solutions for historic buildings with best practices in mind.

Presenters: Richard Lartz II, Executive Director, Barton County Historical Society, Great Bend, KS

Seth McFarland, Director, Santa Fe Trail Center, Larned, KS

C2: Creating a Community Leadership Collaboration (CE)

Copano

During the Covid pandemic, leadership from several Corpus Christi community attractions began meeting weekly to discuss how to continue to serve their public and how to keep institutional missions alive. Over three years later, these same Directors continue to meet monthly to support each other, their visitors, and their community through active collaboration.

Presenters: Steve Banta, Executive Director, USS Lexington, Corpus Christi, TX

Michael Womack, Ed.D. Executive Director & Horticulturist, South Texas Botanical Gardens & Nature Center, Corpus Christi, TX

Sara Morgan, Executive Director, Art Museum of South Texas, Corpus Christi, TX

Dianna Bluntzer-Sherman, Executive Director, Art Center Corpus Christi, TX

C3: Advocating for Educators (AD, ED, EMP)

Laguna Madre

Do you feel museum education is important? Can you tell someone why? This panel will explain the value of education while teaching you how to advocate for yourself, your department, or for another institution. Each panelist will provide personal experiences in their careers as a mid-career professional, a university educator, and an emerging museum professional.

Presenter: Jennifer Romanoski, Museum Educator, Jim Gatchell Museum, Buffalo, WY

Kaleigh Huxley, Public Programs Manager, Lone Star Flight Museum in Houston, Texas.

Susan Rowe, Education Program Manager, Lubbock Lake Landmark, Lubbock, TX

MPMA CORPUS CHRISTI SEPTEMBER 29 FRIDAY

C4: Exhibits 101 (EX, SM)

Aransas

Want to know how to create an informative, and inviting exhibit? Come listen to our tips and tricks and learn the basics on how to create an exhibit. A variety of exhibit types will be discussed and focus will be on exhibit creation with a limited budget and staff.

*Presenters: Jenni Opalinski, Curator of History, Panhandle-Plains Historical Museum, Canyon, TX
Delaynna Trim, Curator of Collections, Mabee-Gerrer Museum of Art, Shawnee, OK*

C5: Cultural Stewardship Succession Planning (COLL)

Matagorda

Through a two-year project funded by the Institute for Museum and Library Services, the Conservation Center for Art & Historic Artifacts (CCAHA) and Lyrasis are gathering data and developing professional development resources to support succession planning for collections stewardship staff and volunteers. To begin, CCAHA/Lyrasis are convening listening sessions to learn about succession planning strategies that have—and have not—achieved positive results. This session, structured as an informal conversation, or "focus group," will probe issues related to organizational structure, documentation and procedures for retaining and transferring knowledge, training for emerging leaders, and other key considerations for succession planning.

Presenters: Tom Claeson, Senior Consultant for Digital & Preservation Services, Lyrasis, Westerville, OH

EXHIBIT HALL BREAK & R.E.A.L PRESENTATION STAGE 10:00 a.m. – 10:30 a.m.

Concurrent Sessions

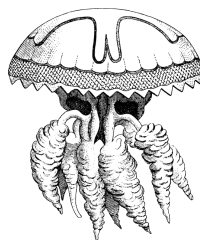
10:30 a.m. - 11:45 a.m.

D1: Using Virtual Tools for Education: Center for Interactive Learning and Collaboration (CE, ED, TECH)

Corpus C

Despite increasing demands, many museum professionals struggle to create virtual education programs and cooperation with educational facilities. Hear how museum professionals of two museums handled creating and establishing virtual education programs through the Center for Interactive Learning and Collaboration (CILC). Then the floor is open to discussion and Q&A.

*Presenter: Daisy Allen, Curator, Wyoming Veteran Memorial Museum, Casper, WY
Kristin Martin, Program Director, Museum of World Treasures, Wichita, KS*



MPMA CORPUS CHRISTI SEPTEMBER 29 FRIDAY

D2: Indigenizing Collections Management (COLL, DEAI, IND)

Copano

Staff from the First Americans Museum will share insights into acquiring and managing collections from our first two years of operations. How choices have been made and where we will go in the future. First Americans Museum opened with the goal of setting a standard for indigenizing museum practices. This process is to be comprehensive, starting with the acquisition of an item, it's journey through research to the Collection's Committee, the items preparation and finally it's care once entrusted to us.

*Presenters: Maryann Guoladdle, Curatorial Assistant, First Americans Museum, Oklahoma City, OK
Leon Natker, Director, Oklahoma History Center, Oklahoma City, OK*

D3: Eating the Elephant: Institutional and Departmental Planning (AD, EMP, SM)

Laguna Madre

Learn to embrace planning as an institution, as a department, and as an individual. Learn to utilize standard documents like budgets and employee evaluations as planning tools, and how to do the work that makes it possible for ourselves, our staff, and our institutions feel better and accomplish more.

Presenters:

*Jason Harris, Director, Chisholm Trail Museum, Kingfisher, OK
Donna Merkt, Executive Director, South Dakota Art Museum, Brookings, SD*

D4: Prioritizing Community Voices (CE, DEAI, EX)

Aransas

Our Communities are full of diverse, engaging, and often marginalized voices. Collecting these stories requires dedicated effort in these communities but provides new perspectives and broadens the impact for interpretation. Prioritizing these voices in exhibits and programs increases diversity representation and increases audience relevance. This session will explore ideas, tips, and examples for collecting and prioritizing these voices in the museum setting.

*Presenters: Lauren Hunley, Community Historian, Western Heritage Center, Billings, MT
Andrew Dunehoo, Interim Director, 1881 County Courthouse Museum, Custer, SD*

D5: Ideal World vs. Real World (EMP)

Matagorda

This program's goal is to invigorate EMPs and to influence ongoing education and change, about and within the museum field. The presenters will share different insights on what it means to work in the museum field as an EMP as well as share information about what should be known as an EMP starting out in the museum world. With how many EMPs attend MPMA every year, this session would be a helpful one, and we would welcome discussions from attendees as well.

*Presenters: KayLyn Bean, Director of Museums, Mabee Regional Heritage Center, Plainview, TX
Corey Christianson, Collections Management Specialist, South Dakota Cultural Heritage Center, Brookings, SD*

MPMA CORPUS CHRISTI
SEPTEMBER 29
FRIDAY



L2: Leadership Lunch

Corpus A/B

“Gaining Inspiration from Our Audiences”

11:45 a.m. - 1:00 p.m.

What motivates visitors to spend their time in museums? How has that changed over the last twenty years? How did the pandemic affect those changes? Questions like these should be front and center of our thinking as we shape the next phase of museum practice. Today's audiences are looking for purpose and connection. They want to see themselves reflected in exhibitions and programs, and most of all they are looking for meaningful experiences. Today's session will focus on the current trends in museum audiences, examine the kinds of experiences people are seeking, and how you can learn from those trends to make a change in your organization.



Elee Wood, PhD, is the Nadine and Robert A. Solheim Director of Education and Public Programs at the Huntington Library, Art Museum, and Botanical Gardens in San Marino, CA. She leads institutional efforts in lifelong learning and community engagement activating the Huntington's collection and oversees the areas of school programs, docent and volunteer programs, public programs, interpretation, and community partnerships. Elee got her start in museums as a Wizard Wing youth volunteer at the Milwaukee Public Museum and has been asking questions about audiences ever since. She spent 13 years on the faculty of the Museum Studies Program at Indiana University-Indianapolis and served as the Public Scholar of Museums, Families and Learning at The Children's Museum of Indianapolis. She is the co-author and editor of multiple books on museums the newly published *A New Role for Museum Educators: Purpose, Approach, and Mindset*.

Serving Clients Nationwide



• Conservation Treatment • Imaging Services • Audio Preservation • Preservation Services



nedcc.org

MPMA CORPUS CHRISTI
SEPTEMBER 29
FRIDAY

Concurrent Sessions

1:15 p.m. - 2:30 p.m.

E1: Hooking your audience with STEM and Multisensory Interpretation (ED, INT) Corpus C

For interpreters and educators at historic sites and museums, one of the most challenging tasks can be to inspire our audiences to become invested in the history we teach. In this session, educators from Eisenhower Birthplace State Historic Site and The National Museum of the Pacific War will elaborate on their solution—centering interpretive programs on STEM and multisensory interpretation techniques that appeal to audiences of all ages and backgrounds. By discussing how these techniques have been folded into lesson plans, field trips, living history programs, and other types of in person or digital public programs, the presenters will provide their audience members with ideas that may well spark innovations at their home sites—leading to the invigoration that the conference’s annual theme highlights.

*Presenters: Amanda Lanum, Educator/Interpreter, Eisenhower Birthplace State Historic Site, Denison, TX
Aaron Shuman, Museum Experience Coordinator, National Museum of the Pacific War, Fredericksburg, TX
Kyna Stys, Education and Museum Programs Director, National Museum of the Pacific War, Fredericksburg, TX*

E2: Engaging Practices: Connecting Museums (AD, SM) Copano

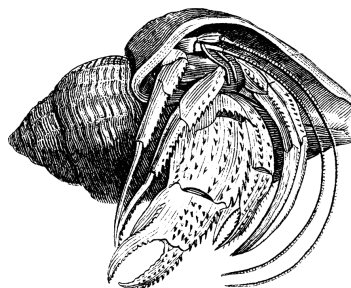
This session shares initiatives used to engage with the local museum community and the larger museum professional world for learning from peers, advocacy, collective marketing, programs, and exhibitions. The session includes a roundtable for attendees to consider the future of making connections through consortiums, partnerships, and other invigorating practices.

*Presenter: Dalene Hodnett, Werner Wildlife Museum/Tate Geological Museum
John Woodward, Cultural Resources Manager, Wyoming Veterans Museum*

E3: Can this kill me? Handling Dangerous Materials in Collections (COLL, F/S) Laguna Madre

Many historical artifacts often contain materials that pose a hazard to people and collections. How should museum professionals handle these situations? What are the best practices and what are the practical solutions? In this session we will have a discussion on how to take care of dangerous and sometimes scary artifacts.

*Presenters: Corey Christianson, Collections Management Specialist, South Dakota State Historical Society, Brookings, SD
Katy Schmidt, Curator of Collections, South Dakota State Historical Society, Brookings, SD*



MPMA CORPUS CHRISTI
SEPTEMBER 29
FRIDAY

Concurrent Sessions

1:15 p.m. - 2:30 p.m.

E4: Using Public Archeology Programs to Reach New Audiences: Some Successes from Texas State Agencies (COLL, CE, ED) Aransas

Archeology as a discipline is uniquely positioned to engage students and the public in education across subjects. The diversity of archeological contexts, methods, and understanding allows for scientific and humanitarian exploration into the development of culture through time. Public archeology specifically seeks to engage general audiences in understanding our collective culture and history. This is accomplished in numerous ways including consultation regarding resources, community curation, and the connection of archeological understanding to critical thinking. Public archeological programming creates new avenues to connect the public and students in critical and tangible examinations of the past. This session will present our work in public archeology, from engagement with local community members in field excavations to student workshops that look at how archeological remains inform our understanding of past behaviors to the reanalysis of curated materials as university class projects. Through this discussion, we hope to encourage museums to look at public archeology and the many programs that it offers as an avenue to engage audiences.

*Presenters: Jamie A. Ross, Archeological Collections Manager, Texas Historical Commission, Historic Sites Division
Sarah Chesney, PhD, Archeologist, Texas Historical Commission
Eleanor Stoddart, Cultural Resource Coordinator, Texas Parks and Wildlife*

E5: Adding Photos to Your Wall: Expanding the Narratives of Difficult Topics Through the Dialogic Process (AD, ED) Matagorda

A facilitated discussion revolving around working with challenging boards and helping them move forward. Many museum boards consist of individuals who have invested in the organization for many decades, but often they can not get past the goals and ideas of yesterday. This discussion will focus on meaningful solutions and tips for how to move forward.

*Presenters: Nicholas Bourgeois, Archeologist, Levi Jordan Plantation Historic Site, Houston, TX
William Polley, Educator, Levi Jordan Plantation Historic Site, Houston, TX
Kennedy Wallace, Educator/Interpreter, Varner-Hogg Plantation, Houston, TX*

EXHIBIT HALL BREAK & R.E.A.L PRESENTATION STAGE

Nueces A/B

2:30 p.m. – 3:00 p.m.

Special Thanks To:

Afternoon Refreshments Sponsored By

DISTINGUISHED.
FINE ART & COLLECTIBLES

MPMA CORPUS CHRISTI
SEPTEMBER 29
FRIDAY

Concurrent Sessions

3:00 p.m. - 4:15 p.m.

F1: Great Expectations: Completing a Cataloging Grant (COLL)

Corpus C

Over the course of two years, the Dallas Holocaust and Human Rights Museum completed an IMLS grant in which they cataloged, digitized, and made publicly available over 7,000 formerly hidden collection items. Throughout this process, the collections team learned vital problem-solving and project management skills as well as cataloging and database task management solutions that facilitated the successful completion of this project. The team will share these solutions with attendees and welcome questions about the grant project.

*Presenters: Robynn Amaba, Assistant Archivist, Dallas Holocaust and Human Rights Museum, Dallas, TX
Anne Hanisch, Project Cataloger, Dallas Holocaust and Human Rights Museum, Dallas, TX
Felicia Williamson, Director of Library & Archives, Dallas Holocaust and Human Rights Museum, Dallas, TX*

F2: Deconstructing an Insurance Policy:

How to Read and Understand Your Museum Insurance Policy

Copano

We will highlight the insurance contract parts to better understand what is covered and what is excluded. Knowing what sections to focus on can confirm for you what is or is not covered. We can review the Declarations page, coverages provided, premiums, deductibles, exclusions and supplemental forms that appear in that contract. Ample time will be available for Q&A.

Presenter: Patrick Drummond, President, Distinguished Fine Art & Collectibles



DORFMAN
MUSEUM FIGURES, INC.
since 1957

Realistic Figures & Conservation Forms

www.museumfigures.com • 800-634-4873

Quatrefoil, Museum of Boulder

Dorfman Conservation Forms created exclusively with Ethafoam® brand inert polyethylene foam.



PHOTO JAY PIERSTORFF PHOTOGRAPHY

BRING NEW AND DIVERSE COMMUNITIES TO YOUR MUSEUM!

- Art from around the world.
- Affordable and easy to install.
- Shipping and logistics included.
- Virtual interactive programming available.

www.saqa.art/exhibitions

SAQA™ GLOBAL EXHIBITIONS

William Reker
DIRECTOR OF GLOBAL EXHIBITIONS
exhibitions@saqa.art
937.912.5009

Art that BRINGS THE WORLD to your museum

SAQA Global Exhibitions will work with special budgetary needs to provide new exhibitions to engage your community.

**MPMA CORPUS CHRISTI
SEPTEMBER 29
FRIDAY**

F3: Dealing with Object Dissociation (COLL)

Laguna Madre

This panel session with an audience discussion component will familiarize participants with dissociation, an agent of deterioration affecting museum collections. Dissociation occurs when objects lose association with their data or are misplaced resulting in loss of value. This loss can create ripple effects throughout the collection affecting interpretive strategies and mission furtherance, among other issues. Dissociation is recognized now as an agent of deterioration. Collections professionals must be aware of this agent and add it to prevention plans as they do for traditional agents such as light, temperature, and relative humidity. The conference theme speaks to professional inspiration. This session aims to inspire collections professionals as to ways of dealing with this agent through a discussion of causes, preventive measures, and anecdotal evidence and solutions.

*Presenters: Daisy Allen, Curator, Wyoming Veteran Memorial Museum, Casper, WY
Jenny Yearous, Curator of Collections, State Historical Society of North Dakota, Bismarck, ND.
Heidi Vaughn, Director, Laboratory of History Museum, Interim Director, Museum Studies Program, Department of History & Geography, University of Central Oklahoma, Edmond, OK.*

F4: How to Have H.O.P.E. for the Future: Honesty, Optimism, Pride, Empowerment (ED, EMP, INT)

Aransas

What keeps you invigorated and inspired for the future? Hear how a beginning-of-career professional has become rejuvenated in her first job. Get ideas from a middle-of-career professional who inspires interns as well as gains inspiration from them. Reflect on how an end-of-career professional has been sparked with new hope for the future by her students. Sometimes it is easy to fall into despair in our everyday lives as museum professionals. Young professionals are hit in the face with the honest reality of workload, planning, execution, and budgets. Mid-career pros get caught in the tried-and-true rut. Near-retirees become complacent and cynical. This presentation takes an inspirational approach. Discover how to be Honest and take a realistic look at the field. Stay Optimistic and enjoy opportunities for self-expression and experimentation. Learn how to take Pride in your work. Become energized and Empowered in the future of museums as well as your own. Above all, H.O.P.E. for the future.

*Presenters: Kaleigh Huxley, Public Programs Manager, Lone Star Flight Museum in Houston, Texas.
Susan Rowe, Heritage Education Program Manager, Lubbock Lake Landmark
Deborah Check Reeves, Emeritus Professor, University of South Dakota, Curator of Education and Woodwinds, National Music Museum, Retired*

F5: Historic Preservation and Museum: A Conversation (AD, COLL, F/S, SM)

Matagorda

A director of historic operations and a preservation architect discuss why a museum might consider hiring a preservation professional, when, and how to find the right professional, and how to work with them to address concerns. Learn from case studies illustrating some of the challenges and opportunities inherent in the use of historic buildings as museums. The conversation addresses conflicts between the preservation of building fabric and the collections housed within it. The audience is encouraged to become part of the conversation.

*Presenters: Ellen Cone Busch, Director of Historic Site Operations at the Texas Historical Commission
Nancy McCoy, FAIA, FAPTAIA, McCoy Collaborative, a Treanor HL Company.*

MPMA CORPUS CHRISTI
SEPTEMBER 29 / SEPTEMBER 30
FRIDAY / SATURDAY

Exhibit Hall Closing Reception

4:15 p.m. - 4:45 p.m.

Silent Auction Closes

4:45 p.m.

Meet-Ups

4:45 p.m. - 5:45 p.m.

M5: Texas Tech University

Corpus C

Join this gathering of faculty, alumni, current students, and those interested in learning more about the Heritage and Museum Science Program in Lubbock, Texas.

M6: Texas Association of Museums

Laguna

Join TAM's networking reception and catch up with other members.'s

M7: Knitting Network

Copano

Calling all knitters! Join experienced and novice knitters to gather, knit, and network. Knitting helps develop listening skills and fine tunes focus for meetings and sessions. Plus, you'll meet new friends.



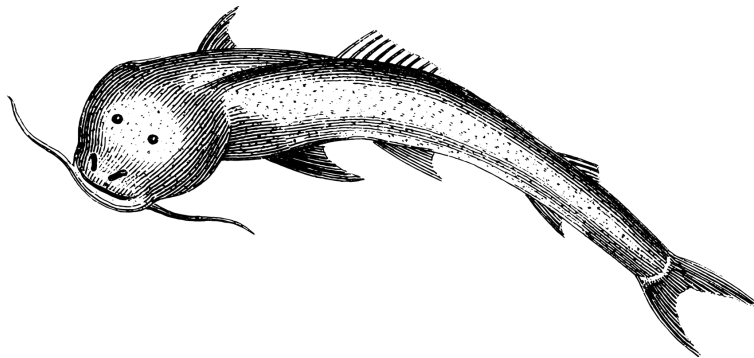
EE3: Awards Dinner and Auction

Corpus A/B

5:15 p.m. - 6:15 p.m. Cash Bar Mix 'n Mingle

6:15 p.m. - 8:30 p.m. Dinner/Program

Join us to celebrate deserving honorees during the annual Awards banquet, which is quickly followed by a raucous live auction to benefit conference scholarship recipients. Enjoy this fun and special occasion with new friends and old pals while acknowledging the good work done throughout the region. Meet the up and coming professionals of the region during the introduction of the 2023 scholarship recipients. Past participants have been overheard saying that this is 'a lot of fun.'



CRĒO EXHIBITS

A DIVISION OF CRĒO INDUSTRIAL ARTS

BOB DYLAN CENTER

TULSA, OK



PRE-CONSTRUCTION - PROJECT MANAGEMENT - EXHIBIT FABRICATION
INTERACTIVE DEVELOPMENT - MEDIA & LIGHTING INTEGRATION

www.creoexhibits.com

Saturday, September 30, 2023

Registration Open

7:30 a.m. - 10:00 a.m.



M8: RC-MPMA Helping Hands Brigade (COLL)

8:00 a.m.- 4:00 p.m.



Tours

T5: Cuero and Goliad

Departure: 8:00 a.m. / Return: 5:00 p.m.

Bus loads at the Shoreline entrance of the Omni

T6: Aransas Bay Dolphin Tour

Departure: 9:15 a.m. / Return: 1:30 p.m.

Bus loads at the Shoreline entrance of the Omni



EE5: Closing Hangout

Corpus C

6:00 p.m. - 9:00 p.m.

Wrap up the conference with a gathering at the Omni for appetizers and a cash bar.



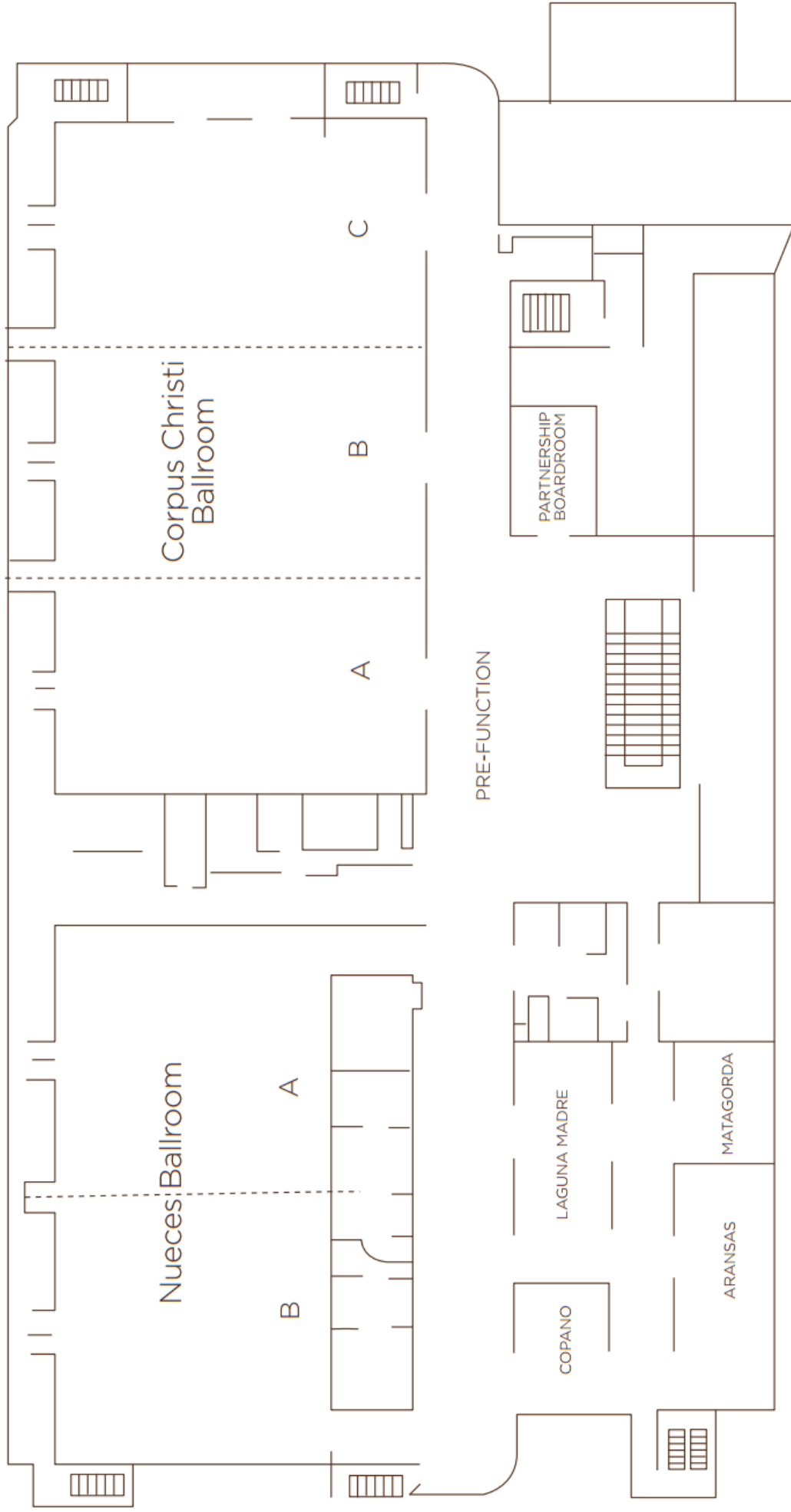
DISTINGUISHED.
FINE ART & COLLECTIBLES

INSURANCE
for MUSEUMS

Easy to Insure, Hard to Replace.
Distinguished Has You Covered.

Contact us at fineartandcollectibles@distinguished.com

Corpus Christi Bayfront Third Floor





SPECIALIZING IN MUSEUM STORAGE



Certified Business Services, Inc.
Centennial, Colorado

www.filingworld.com
(303) 995-1775
bill@filingworld.com