

COUNCIL OF REGIONS

Purpose

The Council of Regions serves as a forum where the leadership of the six regional organizations (Board Chair and Executive Director) and the staff of AAM discuss issues of common concern and exchange information about organizational priorities and activities. It also provides a standing structure that helps facilitate cooperative partnerships between AAM and the six regions for projects and initiatives. The convening of the Council by AAM has also led to the six regions using the structure to establish a peer-to-peer exchange of best practices, innovations and policies related to regional association operations and programs.

Composition

The Council of Regional Associations (CRA) was established by the AAM Board in the mid-1990s as part of the restructuring of AAM governance. The CRA consists of six regional associations that formed independently to serve their respective regions and date back to 1919.

The **New England Museum Association (NEMA)** was established in 1919 and became a six-state region that represents museums in Connecticut, Maine, Massachusetts, New Hampshire, Rhode Island, and Vermont.

The **Association of Midwest Museums (AMM)** was established in 1927 as an eight-state region that represents museums in Illinois, Indiana, Iowa, Michigan, Minnesota, Missouri, Ohio, and Wisconsin.

The **Western Museum Association (WMA)** was established in 1934 and became a nine-state region representing museums in Alaska, Arizona, California, Hawaii, Idaho, Nevada, Oregon, Utah and Washington.

The **Mid-Atlantic Association of Museums (MAAM)** was established in 1945 as a six-state region that represents museums in Delaware, the District of Columbia, Maryland, New Jersey, New York and Pennsylvania.

The **Southeastern Museum Conference (SEMC)** was established in 1951 as a twelve-state region representing museums in Alabama, Arkansas, Florida, Georgia, Kentucky, Louisiana, Mississippi, North Carolina, Puerto Rico, South Carolina, Tennessee, Virginia, West Virginia and Virgin Islands.

The **Mountain -Plains Museums Association (MPMA)** was established in 1953 and is a ten-state region representing museums in Colorado, Kansas, Montana, Nebraska, New Mexico, North Dakota, Oklahoma, South Dakota, Texas and Wyoming.

Operations

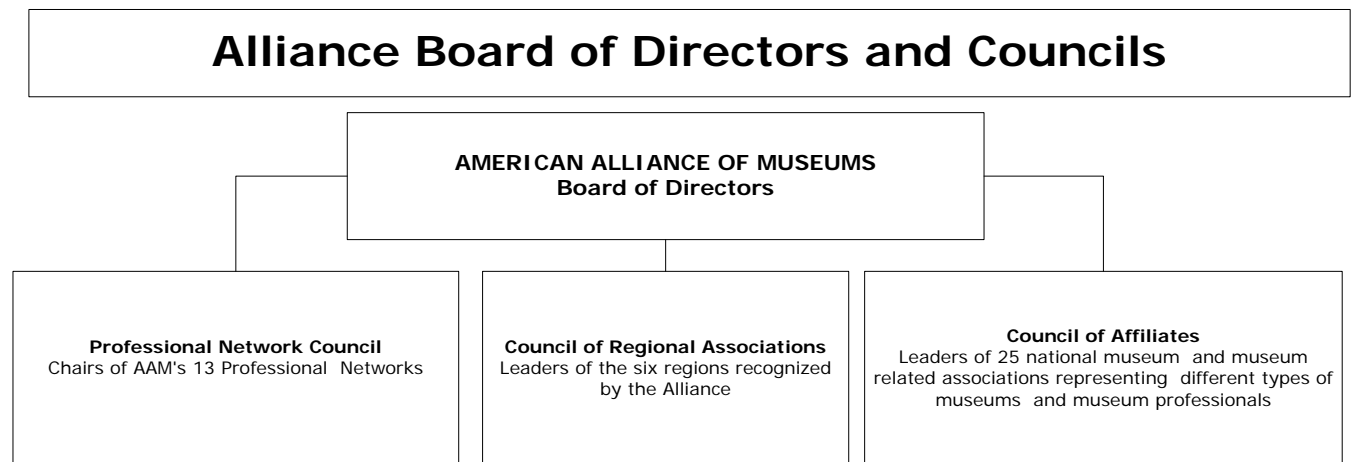
The Council meets twice a year and is chaired by a Regional Board Chair (or President). The responsibility of chair is rotated among the six regions. The chair serves a one-year term from January to December.

The CRA chair, in collaboration with the AAM staff liaison, determines the Council’s agenda and is responsible for the recording of the meeting minutes (task usually assigned to the region’s executive director).

Chair Rotation Schedule: ~~SEMC~~ MPMA(2010) MPMA SEMC (2011), WMA (2012), AMM (2013), NEMA (2014), MAAM (2015), SEMC (2016), MPMA (2017) [Note: For 2010 MPMA and SEMC swapped terms.]

The first CRA meeting falls in the first quarter of the calendar year and recently has been scheduled to be concurrent with AAM’s Museums Advocacy Day. A second meeting is held at AAM’s annual conference and is scheduled for the first day of the meeting. If a Board Chair and/or Executive Director are unable to attend, a region may send an alternate representative from the Board and/or staff to attend.

The CRA is one of three councils established by the Alliance to gather information to help the Alliance Board and staff identify issues facing the field, hear the concerns of other service organization, build cohesion among the museum service organizations and share information on Alliance activities and programming. The other two councils are the Professional Network Council, and the Council of Affiliates.



AAM Board Nominating Committee

The Council also appoints a representative to serve on the AAM Board Nominating Committee. This responsibility is rotated annually among the six regions.

Nominating Committee Rotation pattern: NEMA (2010), MAAM (2011), SEMC (2012), MPMA (2013), WMA (2014), AMM (2015)