

## Membership Categories

### Individual Voting Membership

Open to all museum professionals within the ten-state MPMA region (Colorado, Kansas, Montana, Nebraska, New Mexico, North Dakota, Oklahoma, South Dakota, Texas, & Wyoming) with a role in registrarial or collection management duties.

### Non-voting Membership

Open to those professionals working in museum-related organizations who support the RC-MPMA. Non-voting members are not required to maintain residence within the ten-state MPMA region. They receive all benefits of membership except voting privileges and the right to hold office.

### Mail membership form and dues to:

**Casey Seger**

RC-MPMA Membership Chair  
1155 Q Street  
P.O. Box 880214  
Lincoln, NE 68588-0250

Questions? Call 402-472-3208 or  
email [mpmarcmpma@gmail.com](mailto:mpmarcmpma@gmail.com)

*Get to know other registration and  
collections management  
professionals in the  
MPMA region!*

## About the Registrars Committee MPMA

The RC-MPMA is affiliated with the Collection Stewardship Professional Network of the American Alliance of Museums (CS-AAM) and is a part of a national network of information exchange. You do not need to belong to AAM or the CS-AAM, although it is encouraged. The RC-MPMA is a Professional Interest Network (PIN) of the Mountain-Plains Museum Association, and membership in MPMA is strongly urged. To join MPMA contact MPMA Membership Services Coordinator at [membership@mpma.net](mailto:membership@mpma.net).

All museum professionals who have an interest in registration, collection management issues, and related positions are invited to join our organization. Whatever your position or level of expertise in the museum field, you can benefit personally and professionally by joining the RC-MPMA.

### Check out the **FACEBOOK GROUP!**

Be sure to join the new RC-MPMA Facebook Group. Post to the Group with ideas, questions, and insights! Network with other Registrars and Collections Managers!



## Registrars Committee

Mountain-Plains Museums Association

---

Colorado | Kansas | Montana  
Nebraska | New Mexico  
North Dakota | Oklahoma  
South Dakota | Texas  
Wyoming

---

*The purpose of the RC-MPMA is to  
promote high standards of museum  
practice and to foster professional  
growth between registrars and  
individuals in related fields.*

# Membership Benefits

## Newsletter

Our Newsletter may include articles on registration and collections issues; updates from museums throughout the region; announcements of upcoming national and regional meetings; notification of recent legislation; and job postings. All members are invited to submit articles and news items for the Newsletter.

## Travel Scholarships

RC-MPMA offers travel scholarships each year for Individual Voting Members to attend the MPMA Annual Conference. The scholarships pay registration fees and help cover other travel costs.

All Members are encouraged to participate in the annual MPMA conference and join us for our annual meeting and events during the conference.

## Networking

Take advantage of the opportunity to meet other museum professionals in the MPMA region to share information, ideas, and common concerns. Join—or take advantage of!—the Helping Hands Brigade, held during each annual conference.



## Travel Scholarships

*Only current individual RC-MPMA members may apply*

*Scholarship information and applications posted on the RC-MPMA website  
[www.mpma.wildapricot.org/Registrars-and-Collection-Managers](http://www.mpma.wildapricot.org/Registrars-and-Collection-Managers)*

*Deadlines usually in mid-summer with winners notified by September*

Contact the Scholarship Chair **Jenny Dee Yearous** at [jyearous@nd.gov](mailto:jyearous@nd.gov) or [701-328-2099](tel:701-328-2099)

## Helping Hands Brigade

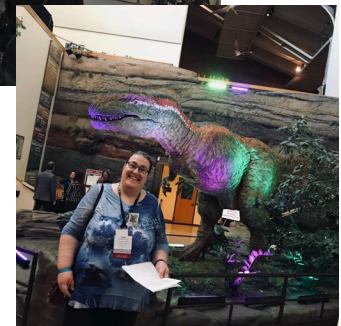
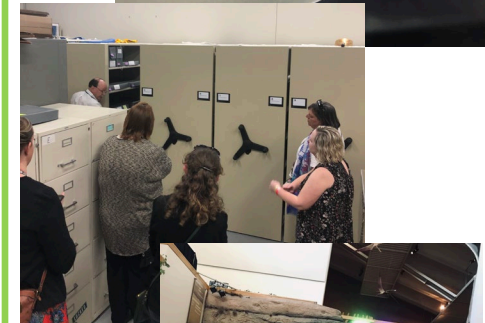
*Feel overworked?  
Wish you had more help?  
**You are not alone!***

Each year, volunteers from the RC-MPMA offer one or more institutions in the MPMA conference's host city a helping hand with registration or collections projects.

If your institution would benefit from this free, professional service or to volunteer your skills, please contact the coordinator, **Heather Coffman** at [hcoffman@comanchemuseum.com](mailto:hcoffman@comanchemuseum.com) or call 580-353-0404.

*Brochure last updated October 2019.*

## 2019 MPMA Conference Snapshots!



**Thanks Albuquerque!**  
Join us in 2020 for fun times  
at the MPMA Conference in  
Sioux Falls!